

## EMI SILICONE MOULDED CONNECTOR GASKET

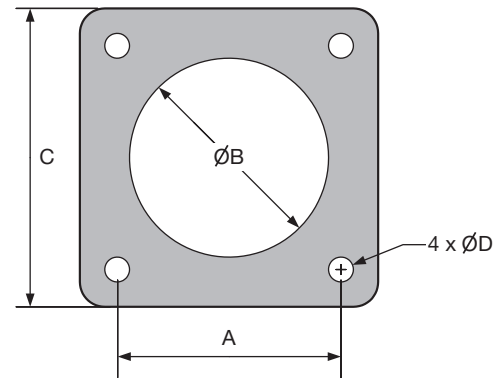
### SPECIFICATION

Material: Silicone Elastomer

Filler: Silver Plated Copper (Ask for other filler)

Resistivity (MIL G 83528): 15 Ω/cm

SCP PART NUMBER	SHELL SIZE	A	B	C	D
	tolerance (mm)	0,25	0,51	0,38	0,25
SCP115GT1000	9	18,20	19,00	24,50	3,60
SCP117GT1000	11	20,60	22,23	26,93	3,60
SCP119GT1000	13	23,00	25,53	29,30	3,43
SCP122GT1000	15	24,60	28,83	31,95	3,96
SCP124GT1000	17	27,00	32,00	34,32	3,96
SCP125GT1000	19	29,36	34,93	38,10	3,60
SCP127GT1000	21	31,75	38,10	41,30	3,60
SCP129GT1000	23	34,93	41,30	44,45	4,37
SCP131GT1000	25	38,10	44,45	47,63	4,37



## EMI SILICONE GASKET FOR JAM NUT

### SPECIFICATION

Material: Silicone Elastomer

Filler: Silver Plated Copper (Ask for other filler)

Resistivity (MIL G 83528): 15 Ω/cm

SCP PART NUMBER	SHELL SIZE	CROSS SECTION	INSIDE Ø
SCPLR17GT1000	9	1.80 (+ / - 0.08)	20.30 (+ / - 0.25)
SCPLR18GT1000	11	1.80 (+ / - 0.08)	25.10 (+ / - 0.25)
SCPLR12GT1000	13	1.80 (+ / - 0.08)	28.30 (+ / - 0.25)
SCPLR13GT1000	15	1.80 (+ / - 0.08)	31.50 (+ / - 0.25)
SCPLR19GT1000	17	1.80 (+ / - 0.08)	34.60 (+ / - 0.25)
SCPLR20GT1000	19	2.60 (+ / - 0.15)	37.80 (+ / - 0.25)
SCPLR84GT1000	21	2.60 (+ / - 0.15)	40.90 (+ / - 0.40)
SCPLR124GT1000	23	2.60 (+ / - 0.15)	44.10 (+ / - 0.40)
SCPLR125GT1000	25	2.60 (+ / - 0.15)	47.40 (+ / - 0.40)

