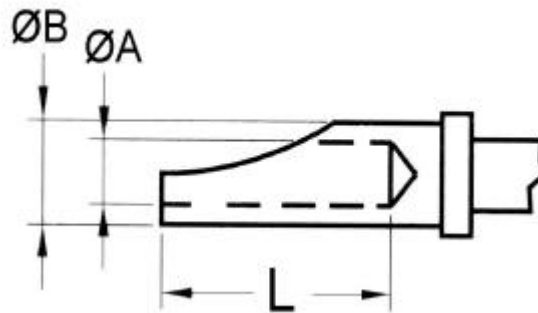


Aislamiento - Insulating (Resistencia de aislamiento mínima - Min insulating resistance : $\approx 5 \times 10^3 \text{ MW}$)

Rango de servicio - Service rating

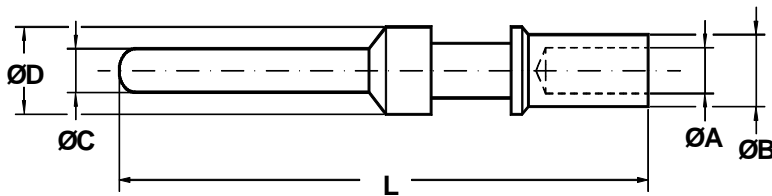
Clase Class	Tensión de trabajo Vcc Operating voltage Vdc	Tensión de trabajo Vcc Operating voltage Vac RMS	Tensión de test Vca Test voltage Vac RMS
INST.	250 V	200 V	1000 V
A	700 V	500 V	2000 V
D	1250 V	900 V	2800 V
E	1750 V	1250 V	3500 V
B	2450 V	1750 V	4500 V
C	4200 V	3000 V	7000 V

Dimensión de los contactos para soldar - Solder contacts dimensions



Tamaño contactos Contact size	A	B	L
16	1.7	2.6	6.4
12	2.7	4.0	8.5
8	4.5	6.9	12.7
4	7.2	9.5	12.7
0	11.5	14.3	15.5

Contactos para crimpar Crimp contacts



Contactos macho Male contacts

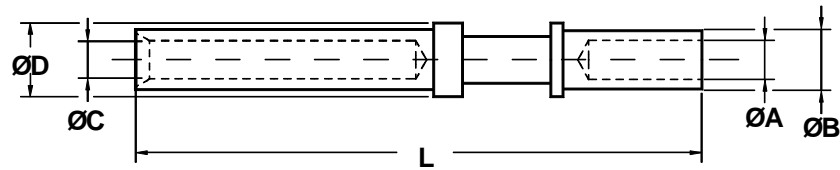
Codigo P/N	Tipo Size	Sección mm ²	AWG	A +0 -0.1	B +0 -0.1	C ±0.02	D +0 -0.1	L ±0.1
SCP10 - 40579	18	0.15 / 0.6	26 / 20	1.30	1.93	1.40	2.2	29.60
SCP10 - 40553	16S	1 / 1.5	18 / 16	1.70	2.60	1.58	3.2	26.65
SCP10 - 40553 - 12 *	16S	0.6	20	1.20	2.60	1.58	3.2	26.65
SCP10 - 40553 - 13	16S	0.15 / 0.6	26 / 20	1.30	1.93	1.58	3.2	26.65
SCP10 - 40553 - 15 *	16S	1	18	1.50	2.60	1.58	3.2	26.65
SCP10 - 40553 - 20 *	16S	2	14	2.00	2.90	1.58	3.2	26.65
SCP10 - 40553 - 26 *	16S	3	12	2.50	3.80	1.58	3.2	26.65
SCP10 - 40557	16	1 / 1.5	18 / 16	1.70	2.60	1.58	3.2	31.75
SCP10 - 40557 - 08 *	16	0.15 / 0.2	26 / 24	0.85	1.55	1.58	3.2	31.75
SCP10 - 40557 - 12 *	16	0.6	20	1.20	2.60	1.58	3.2	31.75
SCP10 - 40557 - 13	16	0.15 / 0.6	26 / 20	1.30	1.93	1.58	3.2	31.75
SCP10 - 40557 - 15 *	16	1	18	1.50	2.60	1.58	3.2	31.75
SCP10 - 40557 - 20 *	16	2	14	2.00	2.90	1.58	3.2	31.75
SCP10 - 40557 - 26	16	3	12	2.50	3.80	1.58	3.2	31.75
SCP10 - 40557 - 32 *	16		32 / 28	0.45	1.95	1.58	3.2	31.75
SCP10 - 40561	12	3	12	2.50	3.90	2.38	4.8	37.65
SCP10 - 40561 - 12 *	12	0.6	20	1.20	2.60	2.38	4.8	37.65
SCP10 - 40561 - 15	12	1	18	1.50	3.40	2.38	4.8	37.65
SCP10 - 40561 - 20	12	1 / 2	18 / 14	2.00	3.80	2.38	4.8	37.65
SCP10 - 40561 - 22	12	2.5		2.20	3.80	2.38	4.8	37.65
SCP10 - 40561 - 30	12	4		3.00	4.80	2.38	4.8	37.65
SCP10 - 40561 - 30M *	12	4		3.30	4.20	2.38	4.8	37.65
SCP10 - 40561 - 38	12	6		3.60	4.80	2.38	4.8	37.65
SCP10 - 40792	8	6 / 8	8	4.50	6.90	3.59	7.8	42.00
SCP10 - 40792 - 50	8	10		5.00	6.90	3.59	7.8	42.00
SCP10 - 113474 - 4P	4	22	4	7.15	9.53	5.70	11.0	42.00
SCP10 - 113474 - 1P	0	50 / 60	0	11:50	14:30	9.05	15.1	45.00
SCP10 - 113474 - 0P	4/0	107	4/0	16:50	20:00	12.69	20.0	63.00

Para los contactos señalados con asterísco consultar con nuestro servicio de ventas.

Para la herramienta de crimpar consultar con nuestro servicio de ventas .

Please consult our sales department for other contacts or crimp tooling details .

Contactos hembra
Female contacts



Codigo	Tipo	Sección mm ²	AWG	A +0.1 -0	B +0 -0.1	C +0.05 -0	D +0 -0.1	L ±0.1
P/N	Size							
SCP10 - 40588	18	0.15 / 0.6	26 / 20	1.30	1.93	1.48	2.2	34.40
SCP10 - 40552	16S	1 / 1.5	18 / 16	1.70	2.60	1.65	3.2	26.65
SCP10 - 40552 - 12	16S	0.6	20	1.20	2.60	1.65	3.2	26.65
SCP10 - 40552 - 13	16S	0.15 / 0.6	26 / 20	1.30	1.93	1.65	3.2	26.65
SCP10 - 40552 - 15	16S	1	18	1.50	2.60	1.65	3.2	26.65
SCP10 - 40552 - 20	16S	2	14	2.00	2.90	1.65	3.2	26.65
SCP10 - 40552 - 26	16S	3	12	2.50	3.80	1.65	3.2	26.65
SCP10 - 40556	16	1 / 1.5	18 / 16	1.70	2.60	1.65	3.2	36.50
SCP10 - 40556 - 08	16	0.15 / 0.2	26 / 24	0.85	1.55	1.65	3.2	36.50
SCP10 - 40556 - 12	16	0.6	20	1.20	2.60	1.65	3.2	36.50
SCP10 - 40556 - 13	16	0.15 / 0.6	26 / 20	1.30	1.93	1.65	3.2	36.50
SCP10 - 40556 - 15	16	1	18	1.50	2.60	1.65	3.2	36.50
SCP10 - 40556 - 20	16	2	14	2.00	2.90	1.65	3.2	36.50
SCP10 - 40556 - 26	16	3	12	2.50	3.80	1.65	3.2	36.50
SCP10 - 40556 - 32	16		32 / 28	0.45	1.95	1.65	3.2	36.50
SCP10 - 40560	12	3	12	2.50	3.90	2.48	4.8	37.65
SCP10 - 40560 - 12	12	0.6	20	1.20	2.60	2.48	4.8	37.65
SCP10 - 40560 - 15	12	1	18	1.50	3.40	2.48	4.8	37.65
SCP10 - 40560 - 20	12	1 / 2	18 / 14	2.00	3.80	2.48	4.8	37.65
SCP10 - 40560 - 22	12	2.5		2.20	3.80	2.48	4.8	37.65
SCP10 - 40560 - 30	12	4		3.00	4.80	2.48	4.8	37.65
SCP10 - 40560 - 30M	12	4		3.30	4.20	2.48	4.8	37.65
SCP10 - 40560 - 38	12	6		3.60	4.80	2.48	4.8	37.65
SCP10 - 40793	8	6 / 8	8	4.50	6.90	3.73	7.8	42.00
SCP10 - 40793 - 50	8	10		5.00	6.90	3.73	7.8	42.00
SCP10 - 113474 - 4S	4	22	4	7.15	9.53	5.84	11.0	42.00
SCP10 - 113474 - 1S	0	50 / 60	0	11:50	14:30	9.20	15.1	45.00
SCP10 - 113474 - 0S	4/0	107	4/0	16.50	20.00	12.70	20.0	65.50

*Para los contactos señalados con asterísco consultar con nuestro servicio de ventas.

Para la herramienta de crimpar consultar con nuestro servicio de ventas .

Please consult our sales department for the contacts marked with *.

For the crimp tooling , please consult our sales department.