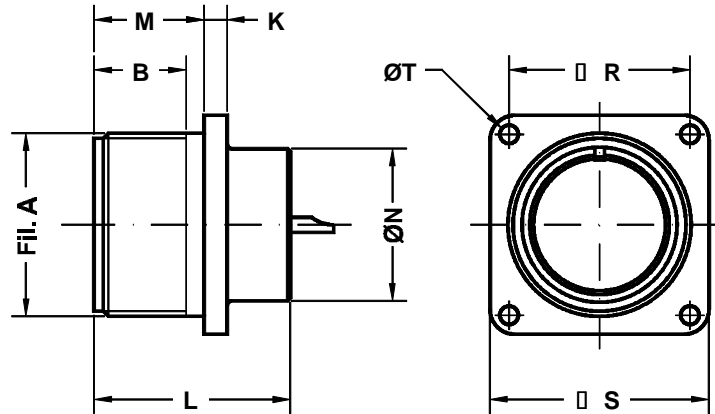


Conector de base cuadrada para panel Box mounting receptacle



Ej./Ex. : SCP3102A20-27P

Dimensiones del conector Shell Size	Rosca A A thread	B m in .	K ±0.2	L ±0.2	M +0.2 -0	N +0.2 -0	R ±0.1	S ±0.2	T +0.1 -0
10 S L	0.6250 - 24UNEF	11	2.8	24.6	14.3	15.9	18.25	25.4	3.2
12 S	0.7500 - 20UNEF	11	2.8	24.6	14.3	15.9	20.60	27.8	3.2
12	0.7500 - 20UNEF	16	2.8	34.5	19.1	15.9	20.60	27.8	3.2
14 S	0.8750 - 20UNEF	11	3.3	24.8	14.5	19.0	23.00	30.0	3.2
14	0.8750 - 20UNEF	16	3.3	34.5	19.1	19.0	23.00	30.0	3.2
16 S	1.0000 - 20UNEF	11	3.3	24.8	14.5	22.2	24.60	32.5	3.2
16	1.0000 - 20UNEF	16	3.3	34.5	19.1	22.2	24.60	32.5	3.2
18	1.1250 - 18UNEF	16	4.0	34.2	19.1	25.5	27.00	35.0	3.2
20	1.2500 - 18UNEF	16	4.0	34.2	19.1	28.5	29.40	38.0	3.2
22	1.3750 - 18UNEF	16	4.0	34.2	19.6	31.7	31.75	41.0	3.2
24	1.5000 - 18UNEF	17	4.0	35.7	20.6	34.9	34.90	44.5	3.7
28	1.7500 - 18UNS	17	4.0	35.7	20.0	41.4	39.70	50.9	3.7
32	2.0000 - 18UNS	17	4.0	37.3	22.3	47.6	44.45	57.0	4.3
36	2.2500 - 16UN	17	4.0	37.3	22.3	52.4	49.20	63.5	4.3
40	2.5000 - 16UN	17	4.0	37.3	22.3	58.7	55.55	69.9	4.3

Conector de base cuadrada para panel.
Clase A: para uso general.
Clase E, R: para aplicaciones que requieran un alto grado de estanqueidad.

Box mounting square flange receptacle.
Class A: for general use,
Class E, R: for environmental sealing.