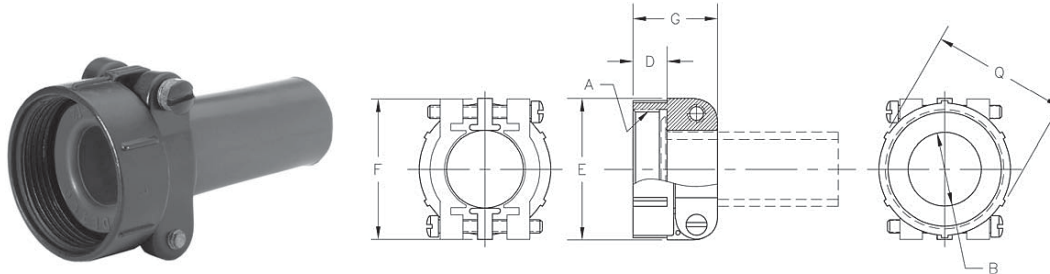


Cable Clamp- MS 3057-XXA

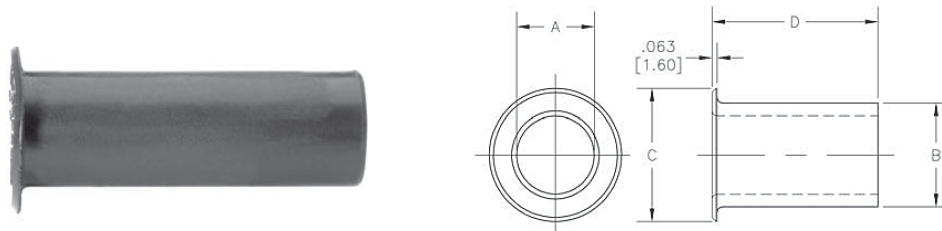
Concentric cable clamps. They insure strain relief and central location of the cable. Can be used with bushing MS 3420.



Shell Size	Clamp Part Number	A Thread Class 2B Inch	B Diameter mm inches	D mm inches	G mm inches	E-F-Q mm inches	Bushing Part Number
10SL	MS3057-4A	.625-24UNEF	8 .32	10.5 .41	20.6 .81	22.0 .87	MS3420-4
14S	MS3057-6A	.750-20UNEF	11.0 .43	10.5 .41	22.2 .87	27 1.06	MS3420-6
16S & 16	MS3057-8A	.875-20UNEF	14.2 .56	10.5 .41	24 .95	28 1.1	MS3420-8
18	MS3057-10A	1.000-20UNEF	15.8 .62	10.5 .41	28.5 1.12	33 1.3	MS3420-10
20 & 22	MS3057-12A	1.187-18UNEF	19 .75	10.5 .41	24 .95	35 1.38	MS3420-12
24 & 28	MS3057-16A	1.437-18UNEF	23.8 .94	10.5 .41	26 1.02	43 1.69	MS3420-16
32	MS3057-20A	1.750-18UNS	31.7 1.25	12.5 .49	28 1.1	51 2.01	MS3420-20
36	MS3057-24A	2.000-18UNS	35.0 1.38	14 .55	29.4 1.16	58 2.28	MS3420-24
40	MS3057-28A	2.250-16UN	41.2 1.62	14 .55	42.8 1.68	65 2.56	MS3420-28

Bushing MS 3420-XX

Bushing of synthetic rubber to be used with cable clamps MS 3057 A for protection of the cable or wires. These bushings can be telescoped for smaller cable diameters.



Bushing Part Number	Used With Cable Clamp	A Diameter mm inches	B Diameter mm inches	C Diameter mm inches	D mm inches
MS3420-4	MS3057-4A	5.58 .22	7.7 .3	12.8 .5	69.8 2.75
MS3420-6	MS3057-6A	7.92 .312	10.8 .43	15.7 .62	66.8 2.63
MS3420-8	MS3057-8A	11.09 .437	14 .55	18.8 .74	63.5 2.5
MS3420-10	MS3057-10A	14.27 .562	15.6 .61	22.6 .89	60.3 2.37
MS3420-12	MS3057-12A	15.87 .625	18.8 .74	27.6 1.08	57.1 2.25
MS3420-16	MS3057-16A	19.05 .75	23.5 .93	33.3 1.31	53.9 2.12
MS3420-20	MS3057-20A	23.79 .937	31.5 1.24	40.5 1.59	50.8 2
MS3420-24	MS3057-24A	31.75 1.25	34.7 1.37	46.9 1.85	47.6 1.87
MS3420-28	MS3057-28A	34.92 1.374	41 1.61	52.9 2.08	44.4 1.75

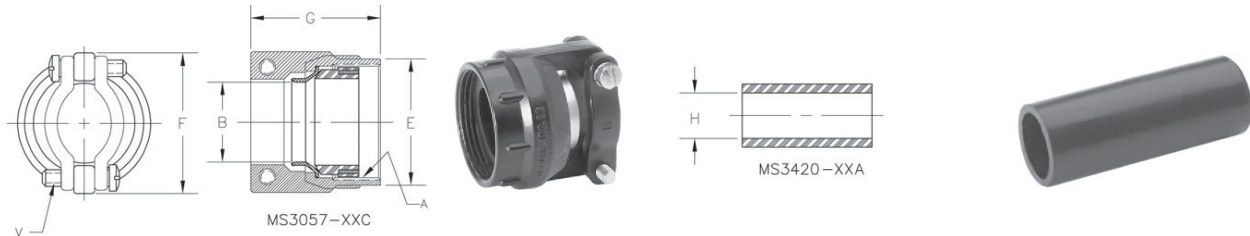


Cable Clamp FRVE 3057 - C

Waterproof clamp for jacketed cables. Provides mechanical strain relief plus concentric clamping over a wide range of cable sizes. A rubber gland seal ensures a waterproof seal on the cable jacket.

FRVE3057-XXC

MS3420-XXA



*"C" Style Clamp With Gland, Cable Clamp Part Number Base FRVE-3057-XXC

*For "C" Style Clamp Bushing, Part Number Base MS3420-XXA

Shell Size	Clamp Part Number*	A Thread Class 2B inches	B approx Open mm / in	B approx Closed mm / in	E +/- .4 .016 mm / in	F +/- .2 .008 mm / in	G + .5 .02 mm in	V Thread Class 2A inches	Bushing Part Number*	H Open mm in
10SL	- 4C	.625-4UNEF	7.93 .312	2.38 .094	19 .748	22.6 .89	32.3 1.272	6-32 UNC	-4A	5.56 .219
14S	- 6C	.750-20UNEF	11.13 .438	6.35 .25	25.8 1.016	25.8 1.016	32.3 1.272	6-32 UNC	-6A	7.93 .312
									-4A	5.56 .219
16S /16	- 8C	.875-20UNEF	13.48	8 .315	25.4 1	28.1 1.106	35.3 1.39	6-32 UNC	-8A	11.1 .437
									-6A	7.93 .312
18	- 10C	1.000-20UNEF	.531	9.6 .375	28.5 1.122	31 1.22	35.7 1.405	6-32 UNC	-10A	11.1 .137
									-6A	7.93 .312
20 / 22	- 12C	1.187-18UNEF	15.87 .625	11.3 .445	33.3 1.311	37.3 1.468	38.5 1.516	8-32 UNC	-12A	13.7 .541
									-8A	11.1 .437
24 / 28	- 16C	1.437-18UNEF	19 .748	15.5 .61	39.6 1.559	42 1.653	44.8 1.764	8-32 UNC	-16A	19 .748
									-12A	13.7 .541
									-8A	11.1 .437
32	- 20C	1.750-18UNS	31.75 1.250	23.4 .921	47.6 1.874	54 2.126	51.6 2.031	.250-20 UNC	-20A	23.8 .937
									-16A	19 .748
									-12A	13.7 .541
36	- 24C	2.000-18UNS	35 1.378	23.4 9.21	53.9 2.122	57.1 2.248	51.6 2.031	.250-20 UNC	-24A	28.5 1.12
									-18A	23.8 .937
									-16A	19 .748
40	- 28C	2.250-16UN	41.25 1.625	29.9 1.177	60.3 2.374	63.5 2.5	51.6 2.031	.250-20 UNC	-28A	31.7 1.25
									-20A	23.8 .937
									-16A	19 .748
44	-32C	2.500-16UN	47.63 1.875	34.9 1.374	66.6 2.622	71.4 2.811	55.6 2.189	.250-20 UNC	-32A	41.2 1.62
									-28A	31.7 1.25

